



CHILDREN'S
HEART
SURGERY
FUND

our impact 2025

Last updated May 2026



“To most people, a heartbeat is something taken for granted. For families like ours, every beat is a gift made possible by the unwavering support of Children’s Heart Surgery Fund.

As you read through their achievements of the past year, take some time to see beyond the charts and figures. We want you to see the first steps, the first days of nursery and the blowing out of birthday candles - milestones Henry reached because of you. Your generosity ensures that the Leeds Congenital Heart Unit remains a world-class centre of excellence, but more importantly, it ensures that families never have to face their darkest moments alone.

CHSF doesn’t just support surgeries; they support futures and entire families. Because of you, we were supported as a whole, including Henry’s older sibling who needed to feel safe while our world was upside down. When we were unable to work, the charity stepped in to assist with our financial struggles, lifting a massive weight from our shoulders so we could focus entirely on our son. Most importantly, providing accommodation meant we were never more than a moment away; it gave us the precious ability to get to Henry’s side quickly during the times he was really ill.

Whether it was the life-saving equipment at the bedside or the practical support that kept our family together, your contributions have been the heartbeat of our journey. This Impact Report showcases how your kindness continues to change the landscape of congenital heart disease for thousands of families across our region.

Because of you, there is hope. Because of you, there is a future. Thank you for being part of our story.

*All our love from
Tom, Mel, Billy and little Henry ”*



A huge thank you to the Hey-Brooke family for writing this special introduction to the 2025 Impact Report.



About CHSF

Children’s Heart Surgery Fund (CHSF) was started in 1988 by surgeon Duncan Walker operating out of Leeds Killingbeck Hospital with the motto “*Each Child a Childhood*” - which was the goal of the region’s Heart Unit at that time.

Decades later, there are now more adults than children living with congenital heart disease (CHD), and over 90% of CHD patients reach adulthood.

1 in 125 babies are born with CHD in our region, and CHSF has never been more essential to their wellbeing. Thanks to our supporters, our charity provides a holistic support service for heart families and dedicated support for young people, championing patients of all ages throughout their lives. Donations also provide vital resources and services including parent accommodation, life-saving medical equipment and staffing beyond the scope of the NHS.

The charity mission is only possible thanks to our special relationships with individuals, organisations, trusts, foundations, communities and businesses - and their incredible fundraising. Our charity directly supports the life-saving work of the Leeds Congenital Heart Unit and the network’s regional clinics.

CHSF provides tailored support and essential resources, ensuring everyone affected in our region has greater control and choices.

Empowered lives, because of you.

[Make a donation >](#)





Who's who?

Meet the team behind CHSF...

The team at CHSF is made up of the following staff, and we work closely together to achieve our aims. Each role and every department is driven by our vision to help build empowered lives for patients and families across our region.



Ruth Davany
CEO
ruth.davany@chsf.org.uk
07933 519998

"I am responsible for the overall management of the charity. This includes managing the CHSF team, working with the Board of Trustees and overseeing the delivery of our charitable objectives."

Family Support

Our Family Support team offers access to practical services, wellbeing support and financial help to heart families when they need us most. We also have a dedicated Youth Worker for our young people living with CHD.



Sarah Cherry
Head of Family Support
sarah.cherry@chsf.org.uk
07929 509227



Lucy McMahon
Family & Youth Support Worker
lucy.mcmahon@chsf.org.uk
07933 185146

Income Generation

Made up of fundraising and marketing professionals, Income Generation is key to the success of our charity and it's all because of you! The team nurture relationships amongst individuals, businesses, communities and trusts to facilitate engaging fundraising opportunities for supporters to join us in our vital mission. Our Corporate, Community, Events and Trust and Foundations staff are inspired by our amazing heart heroes and families to help encourage the donations which keep the charity going. The team also help grow the charity's profile through media coverage, website, social media, campaigns, events and digital - managing everything supporters read, receive and hear.



Georgie Abbott
Corporate Partnerships
georgie.abbott@chsf.org.uk
07933 185145



Amanda Warrent
Corporate Partnerships
amanda.warrent@chsf.org.uk
07508 240843



Lauren Procter
Community Fundraiser
lauren.procter@chsf.org.uk
07940 744596



Keely Scanlon
Fundraising Officer
keely.scanlon@chsf.org.uk
07736 910158



Olivia Lewis
Digital Marketing Manager
olivia.lewis@chsf.org.uk
07852 703727



Rachel Ireland
Fundraising Researcher
rachel.ireland@chsf.org.uk
07932 471575



Evelyn Hazzard
Trusts & Foundations Manager
evelyn.hazzard@chsf.org.uk
07932 471575

Finance, Resources & Governance (FRG)

FRG are responsible for co-ordinating budgets and financial reporting to help ensure we deliver as much support as possible for our beneficiaries. The team assist with grant applications, general charity administration and process the generous donations received from supporters.



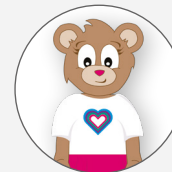
Cath Cook
Head of FRG
cath.cook@chsf.org.uk
07979 900427



Catherine Brown
FRG Manager
catherine.brown@chsf.org.uk
07895 313602



Harjeet Gill
Finance Administrator
harjeet.gill@chsf.org.uk
07704 146095



Katie Bear
CHSF Mascot

Katie Bear is our Mascot, and a pivotal figure used as a tool to show key elements of the CHD journey to children.

CHSF give a Katie Bear teddy to each child who has open heart surgery at Leeds.





Vision

“Empowered lives for everyone born with congenital heart disease in our region.”

Mission

“We enable children, adults and families affected by congenital heart disease to live empowered lives, through our holistic family support services and by providing vital resources to the Leeds Congenital Heart Unit and region.”

Values

Our five core values reflect who we are as a charity

Trustworthy

We deliver on our commitments.

Compassionate

We pride ourselves on reliability, empathy and loyalty.

Approachable

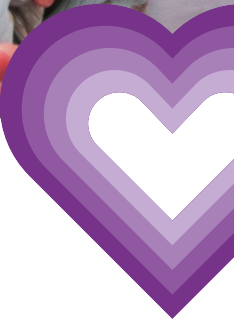
We are approachable and inclusive in everything we do.

Respectful

We value and appreciate one another.

Dedicated

We always go the extra mile.





Our charity's Strategic objectives



Supporting heart families every step of the way

We exist so children, adults and families affected by congenital heart disease (CHD) can live empowered lives by providing practical, emotional, and financial support. This includes:

- **Family Support:** Tailored help and support for families and young people, helping with travel costs, parent accommodation, and providing Comfort & Care Packs for hospital stays
- **Wellbeing & Community:** Offering parent and patient support like Cardiac Cafes and organising events to bring heart families together
- **Support for young patients:** Providing a dedicated Family & Youth Support Worker, as well as special touches like Katie Bears, medals and certificates to celebrate every step of a heart warrior's journey

Supported by:



Funding life-saving resources beyond the NHS

We work alongside families, medical teams, charities and businesses to fund essential roles, equipment and research that go beyond the limits of NHS resources. This includes:

- **Funding key NHS roles:** Helping to establish crucial positions like local Congenital Cardiac Nurse Specialists to support heart patients across the region
- **Providing vital medical equipment:** Working with teams at the Leeds Congenital Heart Unit to fund specialist equipment and training
- **Partnering with other charities:** Supporting essential projects like Eckersley House, run by The Sick Children's Trust, to ensure as many families as possible can stay close to their loved ones during treatment

Our strategic objectives for 2025-26 were devised using feedback from supporters and families in our 2024 surveys, and further refined within CHSF staff workshops. **Thank you to everyone involved!**



Our region Our impact



is the specialist cardiac centre for over **5.7 million** people

and every year

over **17,000**

babies, children and adults are treated as outpatients

approx **385**

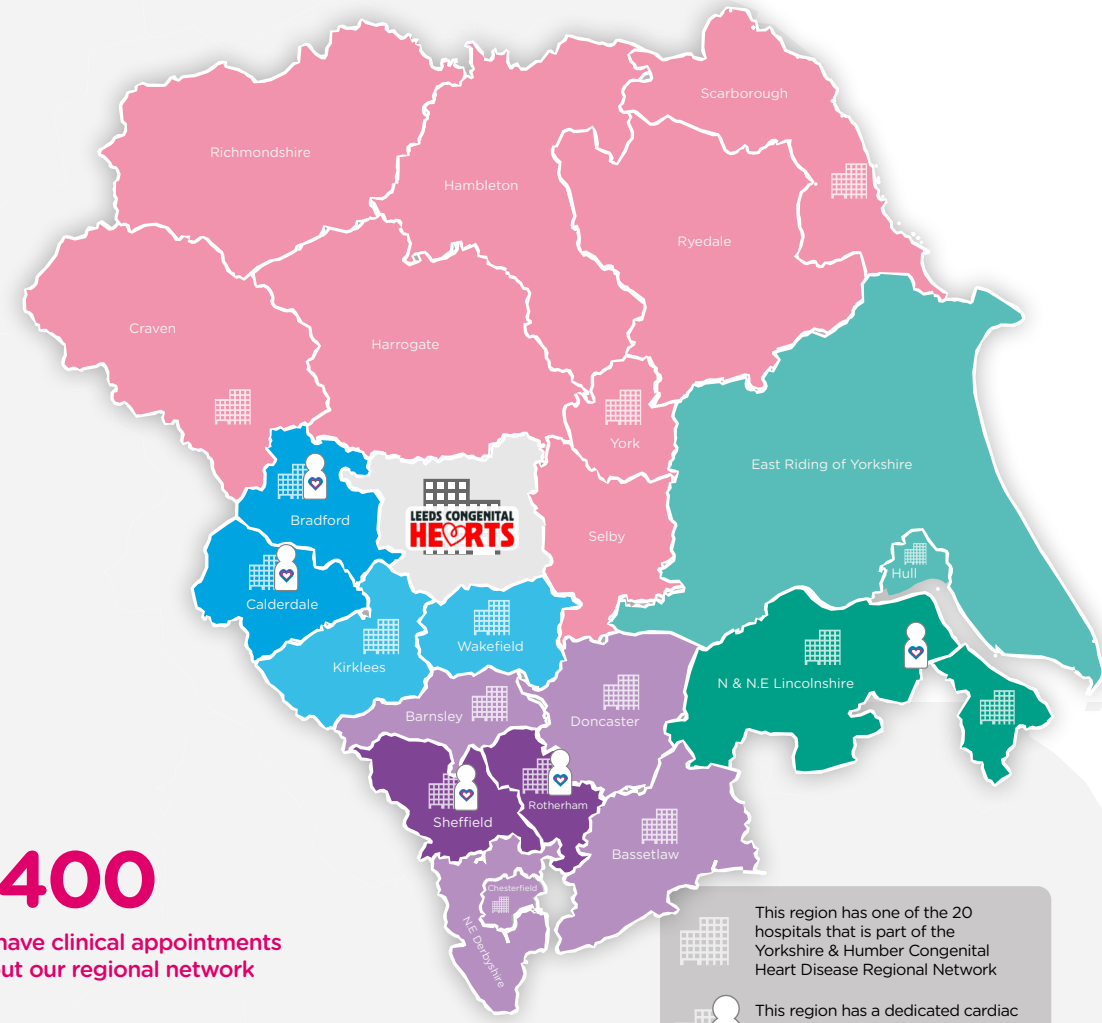
have open heart surgery

approx **580**

have interventional cardiac procedures

over **13,400**

patients have clinical appointments throughout our regional network



- This region has one of the 20 hospitals that is part of the Yorkshire & Humber Congenital Heart Disease Regional Network
- This region has a dedicated cardiac nurse specialist based at their local hospital

As the **only dedicated heart charity for the region**, CHSF aims to support each and every one of these patients, and their families.

(Figures based on the Heart Unit's data from 2023)



Support for families 2025 IN NUMBERS



514

families, young people and adults supported
56% increase on previous year



92%

of families said our heart logo is a trusted symbol



rated
4.9/5

by the families we supported in 2025



600

heart families went on to **fundraise, volunteer, share their story, attend an event or support us in another way** this year

...and we can't thank you enough!



2,555

nights of accommodation in CHSF Family Rooms on Brotherton Wing

*We also fund rooms in **Eckersley House** thanks to your donations, giving families vital respite, and saving countless hours of extra travel, cost and worry.*



3

children won an award at Yorkshire Children of Courage Awards

CHSF kids were winners in the 'Beyond Bravery', 'Fantastic Fundraiser' and 'Dare to Dream' categories

"You would not believe how far your support extends, when our family and friends were unable to visit for the whole 80 days we were in hospital. They felt comforted and reassured that we had you by our side, and they didn't have to worry"



As special thank you to **NEOM Wellbeing** who left gifts in the parent rooms this year



"We had absolutely nothing with us apart from our daughter's changing bag. CHSF came up, had a chat and provided us with everything we needed to stay - such as toiletries, food, a change of clothes, pj's and so much more...! Without them, we really would've struggled as a family."

"That was the best night's sleep I had in weeks! You don't realise it, but having those beds there when I needed it was amazing"



Find out more and request support >



“The 9 days we spent in hospital were made so much easier by the amazing CHSF staff. Children’s Heart Surgery Fund were brilliant. From beginning to end they supported us throughout our son’s journey with everything, from accommodation to just being a shoulder to cry on.” -- parent on heart ward



2025 Family Support Survey Results

“What is most important to you about CHSF?”

- 1. Accommodation
- 2. Help with travel and food vouchers
- 3. Toiletries and wellbeing activities
- 4. A friendly face
- 5. Someone to talk to who understands



1000

Comfort & Care packs given to families

Our Comfort & Care packs are designed to support families during what is often an unexpected and overwhelming time in hospital.

Containing practical essentials like toothpaste, deodorant and shampoo, these packs help take away the stress of everyday needs. We also include a notepad and pen so parents can jot down important information during conversations with doctors, alongside puzzles and fidget toys to provide small moments of distraction during long days on the ward.

For families who arrive in an emergency, often without the chance to pack, we can also provide additional items such as pyjamas and other essentials to ensure they can stay by their child’s side comfortably.

These packs are a simple but meaningful way CHSF helps families focus on what truly matters – being there for their child while they are in hospital.





YOUTH

This year, we provided tailored support to **over 112 of our young people** aged between 12-25 living with CHD.

Our tailored support package for young people includes...

- Referrals
- Youth work transition get-togethers, to prepare for moving into adult services
- Youth events
- Outpatient chats
- In-patient support including a listening ear, toiletry packages or ideas of fun things to do
- Signposting local youth services and information e.g. help completing application forms
- Developing a dedicated 'Youth Hub' on the CHSF website



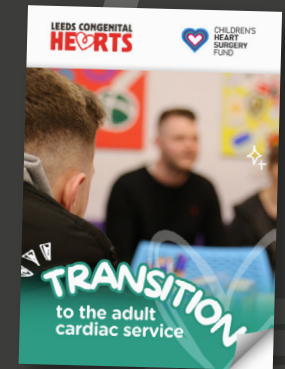
26 young people attended a youth event in 2025

Events included a day at Lineham Farm, a 'Paint & Sip' session and a board game night



100 Transition booklets given

Developed in partnership with clinicians and young people, these books are given to young people moving into adult services



"Thank you to Lucy for playing with my daughter. You playing that board game with her helped her to relax and distracted her while she was fasting. This meant she agreed to stay for her operation." -- Heart mum



Lu
Family & Youth Support Worker



Role supported by





Cardiac Cafes

What are Cardiac Cafes?

At our Cardiac Cafe events we invite parents of children with CHD and adult congenital heart warriors to attend a social event in their local area.

Not only a chance to chat to our Family Support team, we regularly invite professionals from the cardiac unit in Leeds to attend Cardiac Cafe events, as well as others from across the network.

Cardiac Cafes are a space for families to come together in a familiar community setting, such as local Family Hubs across the region - also providing access to lots of useful information and resources.

[Find out more about Cardiac Cafes](#)

12

Cardiac Cafe events held across the region in 2025

88

people attended events including parents, adults living with CHD and children



"Today's event was really good. I had lots of questions about [my son's] support at appointments etc. It was great talking through everything and trying to find solutions."

"We absolutely loved being invited and attending the cardiac café in Hull. Myself and my husband love to sit and chat to others, it's so nice to talk to people about our daughter's condition when they understand what we are saying."

"Had an amazing time. My son loved every moment. It was great to come out of the house and meet people. The staff are lovely and great to be around. Will be coming to more events like this."



A big thanks to Local Specialist Nurse Araminta for coming along to our Bradford cafe!



Support for families



251

Katie Bear teddies given out to children after having open heart surgery at Leeds

Heart warriors also receive a medal and a certificate from CHSF with their surgeon's name on

Wellbeing Trolley

In 2025 we introduced a Wellbeing Trolley to the wards we support in Leeds with the aim to ensure patients and parents are provided with wellbeing support during their stay.

With all items free of charge, the trolley provides:

- a brew for a parent who hasn't had a chance to grab one
- a snack to give a much-needed boost
- some pampering items just to show we care
- resources and activities for babies, children and siblings
- a pick-me-up for our hard-working doctors, nurses and clinicians



A huge thank you to all the businesses who sponsored our Wellbeing Trolley in 2025 and volunteered their time on the wards to help with the trolley!



200

Travel grants completed to support parents when travelling to and from hospital while their child is being treated

"While staying in Leeds for 17 weeks, travel grants helped us go home to Grimsby on a weekend. Without CHSF, we wouldn't have been able to do it financially or see our son who has additional needs."



415

Tesco vouchers given so families can buy food and essentials from a local supermarket during their hospital stay

"The Tesco vouchers were one of the best things we received whilst being in hospital. Being out of work, not knowing when you will go back because your child is so ill yet still needing to feed yourself. So grateful for everything we received but this has to be the top thing for me."

"Being in hospital away from family and friends can be scary but lonely, CHSF makes this journey so much easier always being that friendly face to make a bad day a little bit better."

"The wellbeing trolley was absolutely lovely for us parents, always really polite to me and would have conversations with me, give me lots of pampering items and food. It was really helpful especially as I was in by myself so didn't have much company."



Over half a million pounds donated to Eckersley House

In 2025 we awarded a further £15,000 grant to support Eckersley House, a 'Home from Home' run by The Sick Children's Trust for parents with a seriously ill child in hospital.

Since moving next to Leeds Children's Hospital in 2010, Eckersley House has supported thousands of families needing a place to stay close to their child. Thanks to our incredible supporters, we've now contributed over £500,000 to help keep this vital service running for heart families.

As so many of the families we support rely on Eckersley House and nearby accommodation, continuing to fund these spaces remains a priority for us - helping ensure parents can stay just moments from their child's bedside without added financial strain.

Eckersley House offers 22 family bedrooms (linked directly to the wards by telephone), shared living areas, and full laundry facilities, providing a welcoming and practical space for families facing some of the toughest times imaginable.

Over the last 12 months, families have stayed an average of 21 nights, and recent survey data confirms that families would have struggled to cope and support their child without it.



"For the past 15 years, CHSF has been an incredible partner, donating more than £500,000 in funding to help us support families of children with serious heart conditions being treated at Leeds."

"We are incredibly grateful for their wonderfully generous grant of £15,000 in 2025. This support will make a huge difference, and we cannot thank CHSF enough." -- Jane McHale, House Manager

They include heart hero Louie Jollands from Bottesford in North Lincolnshire.

Louie needed open heart surgery at just four days old, and mum Jess and dad Callum were very grateful for the accommodation.

"CHSF made an impossible time just that little bit more bearable. Staying in CHSF-funded accommodation meant we could be close to Louie during the most critical moments."

"Being far from home, this also lifted a huge financial burden off our shoulders. It allowed us to focus on what mattered most: being there for our son." -- Jess and Callum



Eckersley House

Tel: 0113 392 6505





Pocket ECG

Portable, smartphone-connected ECG monitors called **KardiaMobile devices** funded by CHSF help families capture heart rhythm episodes instantly, wherever they are.

They offer reassurance during symptoms and provide accurate data that can be emailed straight to the heart unit from a mobile phone for rapid review.

- Captures heart rhythm instantly
- Offers reassurance and reduces unnecessary hospital trips
- Portable, easy to use and ideal for families far from specialist centres
- Helps track symptoms and reduces anxiety between appointments

Our impact in 2025

Case studies

Thank you

116
KardiaMobile devices

Isabella's story

“ Isabella had open heart surgery in 2011 for Anomalous Left Coronary Artery from the Pulmonary Artery (ALCAPA). In 2025, she was blue-lighted on many occasions as her heart rate was really high.

She had ongoing chest pains and they diagnosed her with Supraventricular tachycardia (SVT). SVT is a condition causing sudden, rapid heartbeats - over 100 beats per minute.

The nurses in Leeds said they could send her a KardiaMobile device funded by CHSF.

The device connects to her smartphone and records if Isabella is having one of her episodes.

The Kardia can be used in school and has really helped us as a family to see if Isabella needs medical attention. The readings can be sent straight to Leeds digitally if they are high/out of range.

-- Vicki Lloyd, mum to Isabella ”



Isabella had heart surgery in 2011



Isabella

“ Saves travelling to a hospital 35 miles away for bloods. -- heart mum ”

“ The INR machine as been a lifesaver. Alfie is terrified of blood tests and me being able to do it at home has made things so much less stressful. Thank you -- heart mum ”

“ Received my INR machine last year and it's been invaluable. My machine allowed me flexibility and freedom to test at home, giving me a much needed break from appointments. Thank you! -- Amy, living with ACHD ”

Portable **INR machines** funded by CHSF allow children and adults on Warfarin to check their blood-clotting levels safely from home.

Instead of regular hospital visits, families can take a quick finger-prick test and send results straight to the Warfarin clinic - offering reassurance, independence and consistent monitoring wherever they are.

- Fewer hospital appointments
- Minimises missed school or work
- Patient independence
- Makes monitoring less stressful
- Suitable for travel and holidays

60
INR blood testing kits



Home blood testing





Improved access to training, resources and spaces

“ Children’s Heart Surgery Fund covered the travel and accommodation costs to access specialist training and conferences. Events included the British Adult Congenital Cardiac Association conference, Children & Young People’s Nursing conference and attendance at the Association for European Paediatric and Congenital Cardiology.

We’re also grateful to CHSF for improving spaces for the clinical team including the refurbishment of the staff room on Paediatric Intensive Care Unit, new microwaves and fridges for staff rooms and a contribution to the Kite Awards which is an awards evening that recognises and celebrates the achievements of staff across Leeds Children’s Hospital.

The resources and equipment CHSF provide are always valued. This year, the resources included the Fish Tank on Ward 51, Fontan heart condition educational video, the [Sensory Trolley for the Outpatients clinic](#) and CHSF also approved funding for the [Neonatal Ultrasound Training Simulator](#). Thank you so much! ”

Alison Conchie
Regional Congenital Heart Network General Manager and CHSF Trustee





Advancing neonatal care **Cardiac training software for neonates**



A BabyWorks POCUS simulator funded by Leeds Hospitals Charity is helping to improve care for some of our smallest patients at Leeds Children's Hospital.

This innovative equipment allows doctors and nurses to practise vital ultrasound skills in a safe, hands-on environment - without needing to rely on real patients.

For babies, this means safer, more confident care. By training teams before they scan a baby, the simulator improves accuracy, reduces risk and supports faster decision-making, while helping little ones stay settled and undisturbed.

In 2025 CHSF approved funding for specialist Echocardiography and Transoesophageal echo (TOE) software for the simulator - enabling advanced cardiac training that would otherwise be difficult to access. This ensures teams can develop highly specialised skills while further reducing the need for invasive procedures in fragile newborns.

80 Developmental packs for high-risk cardiac babies



Thanks to you we were able to supply the Paediatric Physiotherapy Team at the Leeds Congenital Heart Unit with brand new Developmental Toy Packs for children in the high-risk clinic!

“Just want to say a HUGE thank you to CHSF and their supporters for the developmental toy packs that we use with our youngest infants through our high-risk programme. While these patients are undergoing challenging times medically the packs allow us to focus on their developmental achievements and give the families interactive activities to do with their babies.” -- Sarah Hibbert, Clinical Service Manager, Paediatric Physiotherapy



Claire Gee, Amelia White and Bethany Dikau from the Physio team popped by the CHSF office to collect the packs





Reducing anxiety in clinics

Outpatient appointments can be overwhelming for children and young people living with congenital heart disease, often bringing anxiety, long waits and sensory overload in an unfamiliar environment.

The **Rhino Sensory Voyager Hurricane Trolley** is helping to transform this experience at Leeds Children's Hospital Cardiac Outpatients - creating a calmer, more supportive space for families attending clinics.

around
4700
young patients attend cardiac outpatient appointments each year at Leeds

used
daily
in Outpatient waiting areas and clinic rooms

~50%
of babies born with Down Syndrome have a cardiac condition
Already having a huge impact on patients with additional needs coming in for appointments

1000s
of families from across the region we support

This mobile, multi-sensory trolley uses lights, projections and sound to offer distraction, comfort or a quiet "safe zone", giving children more choice and control during appointments.

It's already making a real difference, particularly for those with additional needs, helping reduce anxiety and creating more positive hospital experiences for years to come.

"Thank you, this is an amazing experience that I am proud to have in the Outpatients area for the benefit of any child or young adult who comes to clinic! We are all grateful for the generosity of CHSF and thinking of us when gifting this sensory magic!" -- Samantha Chadwick-Brown, Sister for Cardiac and Neuro Outpatients



Bella, waiting for her appointment in outpatients



This is only possible thanks to





Inclusion in action

In 2025, we recruited a **Family Support Inclusion Worker, Mansi** to ensure we can tailor our charity's support to all families, young people and adults who need our help.

Through this work, we were able to bring language skills into the team and build up new relationships with the Muslim Chaplain at the LGI. The Chaplaincy team supported us to host evening events in partnership with local restaurant, Tharavadu, for parents and staff in Leeds Children's Hospital to break fast together during Ramadan.



'Comfort & Prayer' pack

"She was just perfect for the role. Really understood what families need and made everyone feel welcome - no matter who they were." -- Mum of a heart patient about Mansi



Mansi introduced a greater range of snacks and drinks on our Wellbeing Trolley, such as a comforting hot cup of chai and halal options.

We were also able to offer 'Comfort & Prayer' packs which include a prayer mat and prayer beads - especially welcomed in times of emergency admissions.

The whole team participated in a **programme of diversity, equity and inclusion training** with Sophie Moreau Consultancy this year too, and we established an internal DEI group to continue our learning.

Thank you to CHSF Ambassador, Saira Ali, for supporting us to shape this inclusion work.





You made it *your* business

We are so lucky that many of the parents we meet in hospital go on to support us in some way. This often includes an introduction to their workplace charity leading to fundraising, volunteering, match-funding and so much more, which is incredible.

One of those parents is Tom Froggett who, after his son Joey had heart surgery in 2021 and 2022, was inspired to nominate CHSF at his workplace **XPS Group**. We are so grateful!

“Children’s Heart Surgery Fund is a cause that is literally very close to our hearts. My son, Joey, had two heart surgeries in Leeds and the CHSF team were an amazing support.”

My employer, XPS Group, is very supportive of charity work: I ran my first ever marathon with a direct contribution from the XPS charity pot; XPS Group hosted a ‘Wear Red Day’ which involved a red-themed raffle and bake sale; we sent volunteers to the Katie Bear’s Picnic event in the summer; and finally, we hosted a quiz night for XPS staff and our clients.

The charity events have been great for our team - they helped boost team morale and overall, the charity fundraising has really added something fun and positive to our team. We intend to carry on supporting CHSF into the future! ”



“Thank you to all of our Corporate Partners for making a real difference to young patients and their families in 2025. Your fundraising and commitment to CHSF demonstrates the power of working collaboratively together to make a lasting impact in the community.” -- CHSF Corporate team



Berry's Jewellers' Charity of the Year



Squire Patton Boggs RYDE challenge



Charity Partner Womble Bond Dickinson at Katie Bear's Easter Hunt event 2025



NEOM Wellbeing, Christmas 2025

A huge thank you to all the businesses that supported CHSF in 2025. We can only do what we do because of you. Find out more at chsf.org.uk/corporate



First in Europe

Thanks to the incredible generosity of CHSF supporters, a state-of-the-art Snuggle™ MRI coil - the first of its kind in Europe - is now helping babies and children receive safer, quicker and more comfortable scans.

This soft, flexible “coil” acts like a specialised camera for the MRI scanner, gently wrapping around patients like a blanket to capture highly detailed images while allowing babies to be fed, soothed and settled naturally - often avoiding the need for a general anaesthetic.



The coil came from InkSpace Imaging in USA and was hand-delivered by Brian Welch, VP of Clinical Partnerships

The coil can even be used while a baby is being held by their parent in the MRI scanner, helping families stay close and reducing stress. It can also support scans before birth, in utero, as well as making the experience less intimidating for older children.



The coil can be used inside the Baby MRI incubator, previously funded by CHSF

Rawr-some designs

Designed with young patients in mind, the coil is decorated with friendly dinosaurs - helping turn unfamiliar, clinical equipment into something more comforting and approachable.

The coil eases anxiety and makes the scan experience a little less daunting.

Dr Malenka Bissell is a Consultant in Paediatric Cardiology and Congenital CMR at Leeds. She is also a trustee of CHSF.

Scan the QR to hear Malenka talk more about this revolutionary piece of tech!



We are very grateful to everyone who has helped to fund this equipment including: The Arnold Burton 1998 Charitable Trust, The Grace Trust, Lord Barnby's Foundation, Michael Cornish Charitable Trust, PF Charitable Trust, The Purey Cust Trust, Sovereign Health Care, Westfield Health and Willie and Mabel Morris Charitable Trust.



A note from Ruth

Firstly, I would like to say a huge thank you to our talented team who work with dedication, compassion and respect in all that they do. The team accomplished an incredible amount this year, increasing the number of families we supported by over 50% and enabling a greater number of families to come together in communities and at events. We have listened and we know spaces that create opportunities for peer support and building relationships with other heart families are valued.

I'm so pleased to see that our Wellbeing Trolley is now a staple in the CHSF week. Widd Signs created a smart new look for the trolley and our volunteers keep this running for us, sharing over 500 cups of tea and chats on Ward L51 this year. I was so moved to see that over 600 families who have been supported by CHSF went on to support us in some way this year, by sharing their story, fundraising for us or taking part in an event. Incredible! We also recruited three heart parents onto our Board of Trustees, involving families in all that we do.

I hope you have enjoyed reading our 2025 Impact Report. The work that we do is only possible because of the partnerships we have in place. We're incredibly proud of our Corporate Partnerships and the funding we receive from the Trusts & Foundations we work with – thank you for all that you do for us.

Thank you also to our talented Board of Trustees for their guidance throughout the year and a particular shout out to Colin for taking on the huge responsibility that is the Katie Bear Mascot at the Children's Heart Surgery Fund Christmas Party – the best day of the year!

Ruth Davany
CEO

<< Back to start



CHILDREN'S HEART SURGERY FUND

Children's Heart Surgery Fund

B5 Joseph's Well, Leeds LS3 1AB

0113 831 4810 | info@chsf.org.uk

[chsf.org.uk](https://www.chsf.org.uk)



Registered Charity No. 1148359



Photo courtesy of Leeds Teaching Hospitals